

HENLEY
• • • AT • • •

HILLSBORO

WOODFIELD A

± 2060 Approx Sq Ft

One Story • Unfinished Basement

3/4 Bedrooms • 2/3 Bathrooms • 3-car Garage



With a back porch and deck, the Woodfield will give you plenty of outdoor pleasure no matter what time of day or year. Inside, pass through the foyer with the dining room on the right into the spacious great room. The open kitchen features an island, breakfast nook and roomy pantry. In the right corner of the home, the primary suite invites you to relax in the luxurious bathroom, where two sinks, a large shower, and a separate tub wait to soothe you. The laundry room sits just steps away. Two more bedrooms sharing a Jack and Jill bath accommodate family or visitors on the opposite side of the home. The unfinished basement offers plenty of space to expand the home with an additional bedroom, bathroom and bonus space.

The developer reserves the right to make changes without notice or obligation. Prices are subject to change. Residence building plans, renderings, and floor plans are artists' conceptualizations and are intended to give general indication of the proposed layout only. They are for illustrative purposes only and are not drawn to scale. All images and dimensions are not intended to create a warranty or contract rights. Need Not Be Built

10/13/20



POWERED BY
Ingram
AND ASSOCIATES

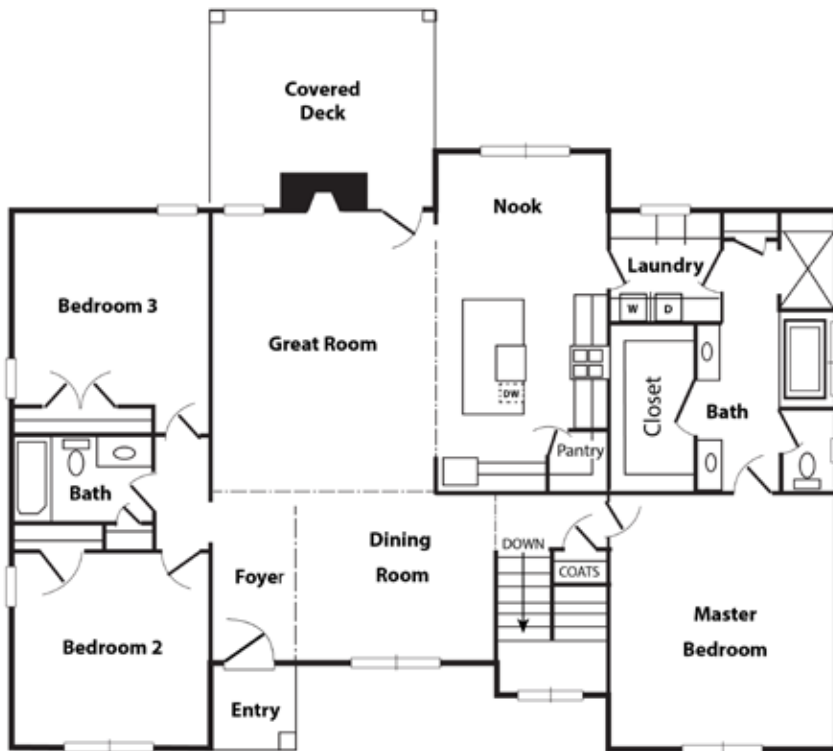
WOODFIELD A

± 2,060 Approx Sq Ft

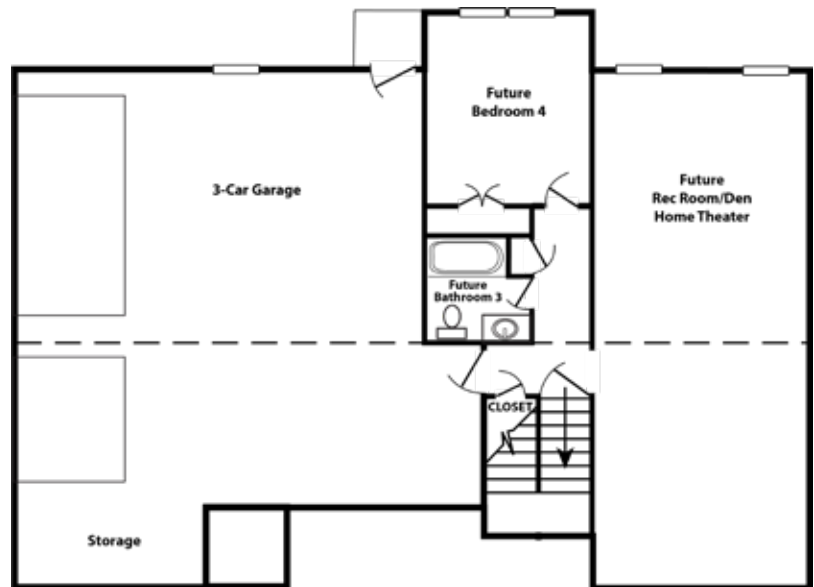
One Story

Unfinished Basement

3/4 Bedrooms • 2/3 Bathrooms



FIRST FLOOR



UNFINISHED BASEMENT

The developer reserves the right to make changes without notice or obligation. Prices are subject to change. Residence building plans, renderings, and floor plans are artists' conceptualizations and are intended to give general indication of the proposed layout only. They are for illustrative purposes only and are not drawn to scale. All images and dimensions are not intended to create a warranty or contract rights. Need Not Be Built



10/13/20

POWERED BY
Ingram
AND ASSOCIATES